

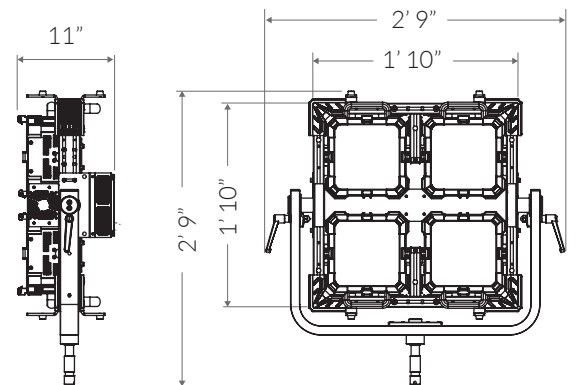
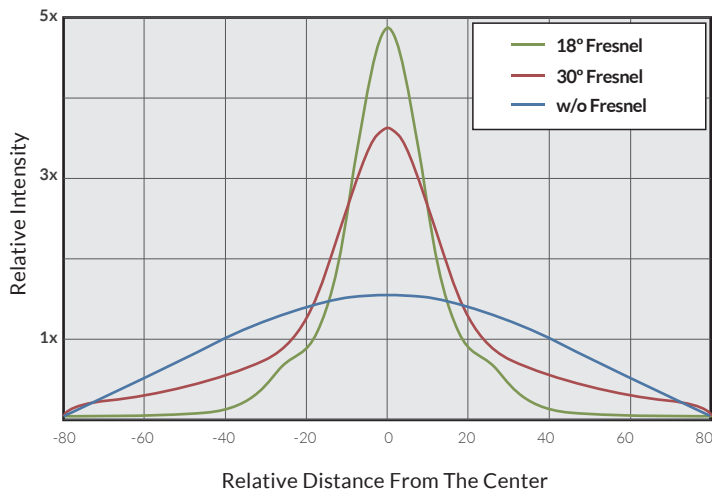
The **QUAD COLOR** is a super-bright punch light that emits 1360W of LED illumination. Powerful yet compact, the QUAD COLOR combines four Matrix fixtures in one ruggedized frame weighing a total of 75lbs (34kg) and standing less than one meter high. This streamlined fixture includes an integrated power supply, cabling, and controls (in addition to XLR-5 DMX in/out) for easy rigging and settings adjustment. With this comprehensive design, the QUAD COLOR excels in any production setting, whether it's set on a floor stand or suspended from a studio lighting grid.



FEATURES

- ~5000W tungsten output (1360W draw)
- High-CRI white light output (2000-10000K)
- 8 and 16-bit color modes: CCTRGBW, CCTHSI, CIExy, etc.
- Optional lensing accessories for increased light intensity
- Integrated cable management & power supply
- Smooth and Sharp dimming modes
- DMX-controllable fan modes: Full, Variable, Silent, Off
- IP-X5 Rating (water resistant)

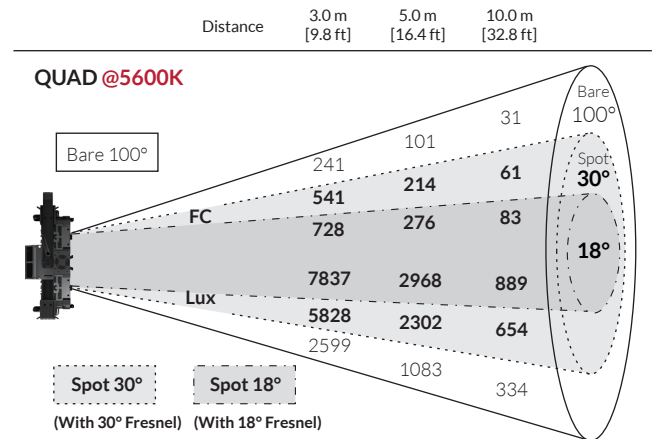
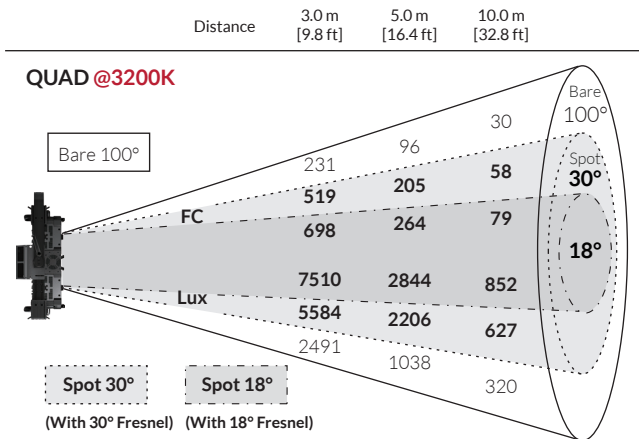
BEAM PROFILE



SPECIFICATIONS

Beam Angle	100° (30° or 18° with fresnel accessories)
CCT Range	2000-10000K continuous tuning + magenta/green shift
CRI / TLCI	95 / 90 typical
Control Modes	CCT, HSI, RGBW, GEL, CCTRGBW, CCTHSI, CIExy, ICTHS, and more
Dimming	100 - 0% flicker free
Dimming Modes	Smooth, Sharp
Light Engine	DiCon Dense Matrix LED
Power Consumption	1360W max AC
BTUs/hour	4436 (BTUs/hour) max
AC Input	100 - 240V AC, 50~60Hz (via powerCON TRUE1)
DMX/RDM Interface	XLR-5 & attached Fiilex DMX controller
Wireless Control	Integrated LumenRadio
Ethernet	sACN, ArtNet (via RJ45)
USB Power Output	5V/1A (via USB-A)
Weight	75lbs / 34kg
Size (L x W x H)	2' 9" x 11" x 2' 9" / 84cm x 27cm x 82cm
Mount Type	Junior stud 1-1/8" male (28mm)
IP Rating	IP-X5 (water-resistant)
Thermal Design	Advanced cooling system (fan cooled)
Operating Temperature	32 - 104°F / 0 - 40°C

PHOTOMETRIC DATA



OPTIONAL ACCESSORIES



Matrix Fresnel Lens, 30°



Matrix Fresnel Lens, 18°